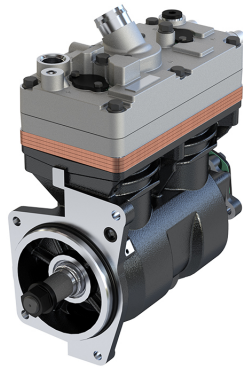


**Application:** 650 cc

**810.01.1000**

**810.01.2000  
(WITH GEAR)**

OEM	OE
LK4973	K214163N01470 130 08 15
K066332N00	470 130 13 15
K066332N01	470 130 17 15
K057764N00	470 130 18 15
K057764N01	470 130 45 15
K168097N00	001 130 75 15
K168097N01	002 130 70 15
K260837N01	002 130 63 15
K214163N01	001 130 81 15
LK4973	470 130 08 15
K066332N00	470 130 13 15
K066332N01	470 130 17 15
K057764N00	470 130 18 15
K057764N01	470 130 45 15
K168097N00	001 130 75 15
K168097N01	002 130 70 15
K260837N01	002 130 63 15
	001 130 81 15

<b>Cylinder Bore</b>	Ø86
<b>Stroke</b>	56
<b>Swept Volume</b>	650
<b>Air Inlet Port Size</b>	Ø34.5
<b>Air Delivery Port Size</b>	M26x1.5
<b>Number of Cylinders</b>	2
<b>Through Drive</b>	Yes
<b>Unloader Port Size</b>	M10x1
<b>Water Or Air Cooled</b>	W
<b>Water Inlet Port Size</b>	M18x1.5
<b>Water Delivery Port Size</b>	M18x1.5
<b>Water Cooled Valve Plate</b>	Yes

## Components

486.01.1100	Crankcase	OEM	OE

486.01.1200	Cylinder Head	OEM	OE

486.01.1220	Cylinder Upper Head	OEM	OE

440.01.1230	Cylinder Lower Head	OEM	OE

486.01.1250	Cylinder Head Kit	OEM	OE
		K091889K50 K091890K50	0021304715 0021304815

486.01.1210	Cylinder Head With Plate Kit	OEM	OE
		K091889K50 K091890K50	

440.01.1300	Plate Kit	OEM	OE

440.01.1310	Plate Kit, Complete	OEM	OE

440.01.1320	Plate Kit	OEM	OE
		K091891K50	

440.01.1400	Connecting Rod	OEM	OE

408.01.1700	Piston With Rings (STD)	OEM	OE
		SEB22547	42549147 42562096 42534241 42536601
408.01.1700-Ø86.00 mm 408.01.1710-Ø86.25 mm 408.01.1720-Ø86.50 mm 408.01.1730-Ø86.75 mm 408.01.1740-Ø87.00 mm			

408.01.1800	Piston Ring Kit (STD)	OEM	OE
408.01.1800-Ø86.00 mm 408.01.1810-Ø86.25 mm 408.01.1820-Ø86.50 mm 408.01.1830-Ø86.75 mm 408.01.1840-Ø87.00 mm			

**440.01.2300 Repair Kit With Bushing**

OEM	OE

**440.01.2350 Repair Kit w/o Bushing**

OEM	OE

**440.01.2330 Repair Kit**

OEM	OE

**440.01.2320 Repair Kit**

OEM	OE
K091883K50	0021304615

**440.01.1280 Head Repair Kit**

OEM	OE

**440.01.2100 Gasket & Sealing Kit**

OEM	OE

**440.01.2200 Valve Kit**

OEM	OE

**175.01.2500 Unloader Valve Kit**

OEM	OE
K034874K50 K159064K50 K049446	1919356 0021304915

**172.01.1900 Cap**

OEM	OE

**543.01.2900 Gear**

OEM	OE
	4701320105

**102.01.2600 Bushing**

OEM	OE
EB00819	1315274 1697278 1697286 5001830853 1697286

**110.01.2700 Screw Kit**

OEM	OE

**487.01.1500 Crankshaft**

OEM	OE

**487.01.1600 Bearing Cover**

OEM	OE

OEM	OE